

DESCRIPTION

The Preso segmented wedge Model COIN[®] segmented or segmental wedge design is a differential pressure type flow element.

CONFIGURATION

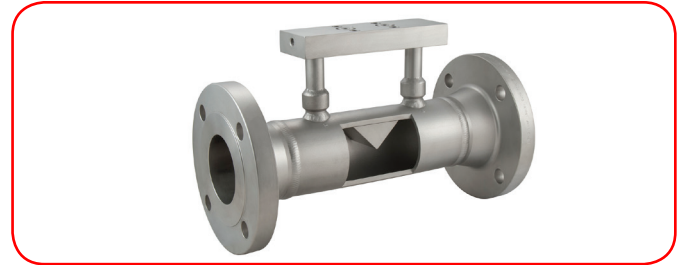
The inlet section is the same diameter as the incoming pipe section and is followed by a precise segmented single piece construction angled section equal on both sides for bidirectional flow measurement. The H/ID ratio is determined by the manufacturer according to recognized standards and formulas. The discharge coefficient (Cd) is linear and stable in the operating flow range.

MATERIALS

The construction material, instrument connections, instrument valves or instrument flange connections, and end connections are selected to meet intended service conditions. Identification tag is provided as required.

ACCURACY & REPEATABILITY

The accuracy of the COIN meter is within $\pm 3.0\%$ (uncalibrated) and $\pm 0.5\%$ (calibrated) with a repeatability of $\pm 0.2\%$ and turndown of 10:1 in the corresponding and appropriate range of Reynolds' Numbers. For custody transfer applications, the COIN meter is flow tested by an independent NIST certified laboratory under the design operating conditions and piping configurations.



QUALITY

All COIN meters are manufactured under an ISO 9001:2008 certified quality program. Certification documentation is available for inspection. The manufacturer will provide a Flow Calculation Data Sheet with standard data and formulas for approval by the design engineer.

APPLICABLE FLUIDS

Liquids, gases and steam.

По вопросам продаж и поддержки обращайтесь:

Архангельск (8182)63-90-72
Астана +7(7172)727-132
Астрахань (8512)99-46-04
Барнаул (3852)73-04-60
Белгород (4722)40-23-64
Брянск (4832)59-03-52
Владивосток (423)249-28-31
Волгоград (844)278-03-48
Вологда (8172)26-41-59
Воронеж (473)204-51-73
Екатеринбург (343)384-55-89
Иваново (4932)77-34-06
Ижевск (3412)26-03-58
Иркутск (395) 279-98-46

Казань (843)206-01-48
Калининград (4012)72-03-81
Калуга (4842)92-23-67
Кемерово (3842)65-04-62
Киров (8332)68-02-04
Краснодар (861)203-40-90
Красноярск (391)204-63-61
Курск (4712)77-13-04
Липецк (4742)52-20-81
Магнитогорск (3519)55-03-13
Москва (495)268-04-70
Мурманск (8152)59-64-93
Набережные Челны (8552)20-53-41
Нижегород (831)429-08-12

Новокузнецк (3843)20-46-81
Новосибирск (383)227-86-73
Омск (3812)21-46-40
Орел (4862)44-53-42
Оренбург (3532)37-68-04
Пенза (8412)22-31-16
Пермь (342)205-81-47
Ростов-на-Дону (863)308-18-15
Рязань (4912)46-61-64
Самара (846)206-03-16
Санкт-Петербург (812)309-46-40
Саратов (845)249-38-78
Севастополь (8692)22-31-93
Симферополь (3652)67-13-56

Смоленск (4812)29-41-54
Сочи (862)225-72-31
Ставрополь (8652)20-65-13
Сургут (3462)77-98-35
Тверь (4822)63-31-35
Томск (3822)98-41-53
Тула (4872)74-02-29
Тюмень (3452)66-21-18
Ульяновск (8422)24-23-59
Уфа (347)229-48-12
Хабаровск (4212)92-98-04
Челябинск (351)202-03-61
Череповец (8202)49-02-64
Ярославль (4852)69-52-93